

U/UTP CAT6A CABLE



ITEM NO.

- 6A U/UTP AWG23

TEST STANDARD

- ISO/IEC 11801, TIA/EIA 568C.2

CONDUCTOR

MATERIAL

- Solid Bare Copper

NOM.O.D.

- 0.565±0.005mm

INSULATION

MATERIAL

- HDPE

NOM.O.D.

- 1.05±0.03mm

JACKET

THICKNESS

- 0.70±0.05mm

EXTERNAL O.D.

- 7.0±0.3mm

MATERIAL

- PVC
- LSZH
- PE

COLOR

- As required

ELECTRICAL

CHARACTERISTICS (20)

• IMPEDANCE(Ω)

- 1 - 250 MHz 100±15
- 251-350MHz 100±18
- 351-500MHz 100±23
- Delay Shew(ns/100m) ≤45
- NVP 69%
- Capacitance(nf/100m) ≤5.6
- DC Resistance(Ω/100m) ≤9.5
- DC Conductor Resistance ≤5.0
- Unbalance(%)

RIP-CORD

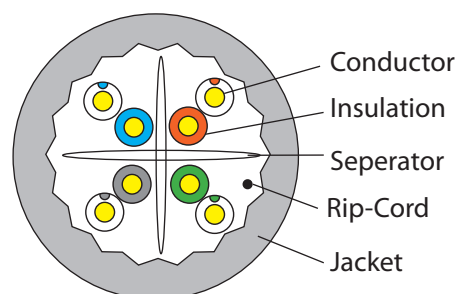
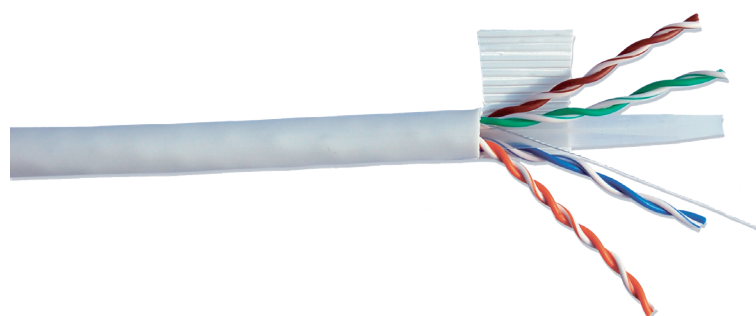
- Yes

DRAIN WIRE

- No



| WOODEN REEL | PALLET |
|---|--|
|  |  |



TECHNICAL PERFORMANCE(100M):

| FREQUENCY (MHz) | RL ≥dB | ATT(20°) ≤dB | NEXT ≥dB | PSNEXT ≥dB | ACR-F ≥dB | PS ACR-F ≥dB | PS ANEXT ≥dB | PS AACR-F ≥dB |
|--------------------|-----------|-----------------|-------------|---------------|--------------|-----------------|-----------------|------------------|
| 1.0 | 20.0 | 2.1 | 74.3 | 72.3 | 67.8 | 64.8 | 67.0 | 67.0 |
| 4.0 | 23.0 | 3.8 | 65.3 | 63.3 | 55.8 | 52.8 | 67.0 | 66.2 |
| 10.0 | 25.0 | 5.9 | 59.3 | 57.3 | 47.8 | 44.8 | 67.0 | 58.2 |
| 16.0 | 25.0 | 7.5 | 56.2 | 54.2 | 43.7 | 40.7 | 67.0 | 54.1 |
| 20.0 | 25.0 | 8.4 | 54.8 | 52.8 | 41.8 | 38.8 | 67.0 | 52.2 |
| 31.25 | 23.6 | 10.5 | 51.9 | 49.9 | 37.9 | 34.9 | 67.0 | 48.3 |
| 62.5 | 21.5 | 15.0 | 47.7 | 45.4 | 31.9 | 28.9 | 65.6 | 42.3 |
| 100 | 20.1 | 19.1 | 44.3 | 42.3 | 27.7 | 24.8 | 62.5 | 38.2 |
| 200 | 18.0 | 27.6 | 39.8 | 37.8 | 21.8 | 18.8 | 58.0 | 32.2 |
| 250 | 17.3 | 31.1 | 38.3 | 36.3 | 19.8 | 16.8 | 56.5 | 30.2 |
| 300 | 16.8 | 34.3 | 27.1 | 35.1 | 18.3 | 15.3 | 55.3 | 28.7 |
| 500 | 15.2 | 45.3 | 33.8 | 31.8 | 13.8 | 10.8 | 52.0 | 24.2 |

Note: PS ANEXT & PS AACR-F are not applicable.

JACKET PHYSICAL PROPERTIES

| | | JACKET | | | | |
|------|------------------|--------------|-------------|-------------------|-------------------|--|
| | | AGING | | COLD BEND | | |
| ITEM | | AGING PERIOD | 100°*24H*7D | COLD PERIOD | -20±2°C*4H | |
| | | Before Aging | After Aging | Bend Radius | 8*Cable O.D. | |
| PVC | Tensile Strength | ≥13.5 Mpa | ≥12.5 Mpa | No Visible Cracks | | |
| | Elongation | ≥150 % | ≥125 % | | | |
| LSZH | Tensile Strength | ≥10.0 Mpa | ≥8.0 Mpa | | No Visible Cracks | |
| | Elongation | ≥125% | ≥100% | | | |
| PE | Tensile Strength | ≥10.0 Mpa | ≥8.0 Mpa | | No Visible Cracks | |
| | Elongation | ≥350 % | ≥350 % | | | |